

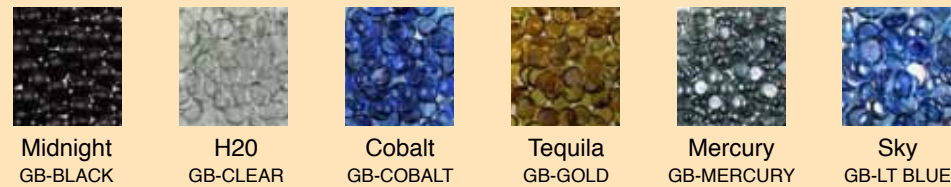


# ACCESSORIES

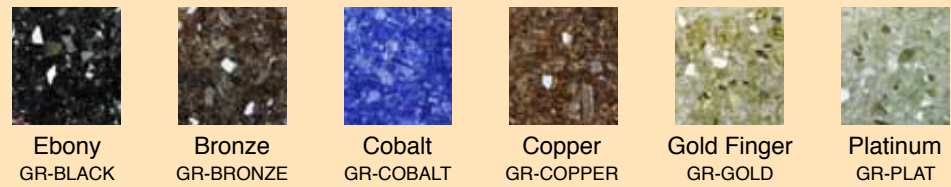
## Fireglass (1/2" to 3/4" in size)



## Liquid Fireglass (16-18mm in size)



## Reflective Fireglass (3/8" to 1/2" in size)



## Log Sets for Fire Pits

Spit Fire



Sedona



Prarie Fire



Lava Stones



Lava Boulders



Driftwood Twigs



Lava Rock



KVSC-PC/8  
Standard Capacity Key Valve



KVSC-HC/8  
High Capacity Key Valve



FG-LPRK  
LP Regulator



FG-60LPHRK  
FG-32LPHRK



Tranquiline Gas Flex  
3/8" or 1/2" OD by 12" to 46" lengths



# FIREPLACES

The warmth and comfort of indoor hearth. The fresh air and beauty of the great outdoors. firegear's Outdoor Fireplaces deliver the fireside experience to your backyard.

## OD42 - Outdoor Ventless Fireplace

### Features

- 42" Stainless Steel Firebox with Reflective Panels
- 30" Stainless Steel Burner comes with Copper Reflective fireglass
- Battery Operated Electronic Ignition with Safety Valve. The Safety Valve will turn the gas off in case of loss of flame
- Includes On/Off Switch and On/Off Remote Control
- A Tempered Glass Windshield is included to protect the flame in windy conditions
- Includes 2" Brushed Stainless Steel Faceplate
- Includes Weather Cover to protect your fireplace when not in operation
- Natural Gas or Propane models available - 44,500 BTU/H
- Optional: Steel Stud Framing Kit (60" Wide x 20" Deep x 51 1/2" Tall), Six piece Driftwood Twig Set and 4" Brushed Stainless Steel Faceplate (pictured above)



## KWST-42N - Keywest Outdoor Ventless See-Thru Fireplace

### Features

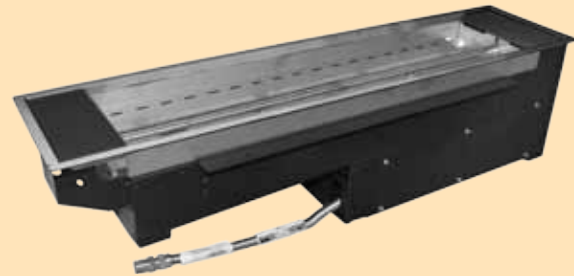
- 42" Stainless Steel Firebox opening with Reflective Side Wall and Ceiling Stainless Steel Panels.
- Includes Steel Stud Framing Kit, overall dimensions: 64 1/16" Wide x 51" Tall x 19" Deep.
- 30" Stainless Steel Burner comes with fireglass
- Battery Operated Electronic Ignition with Safety Valve. The Safety Valve will turn the gas off in case of loss of flame.
- Includes Weather Cover to protect your fireplace when not in operation.
- Ships as Natural Gas, 50,000 BTU/H - Propane Conversion Kit available
- Optional: Six piece Driftwood Twig Set





# BUILT-IN PRODUCTS

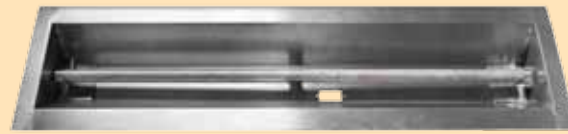
## Key West Burner



The perfect answer for your Linear Built-in Custom Applications. The KWB30-N1 allows you to combine two units to achieve an amazing 60" burn.

- 30" Stainless Steel Burner
- Battery Operated Electronic Ignition with Safety Valve. The Safety Valve will turn the gas off in case of loss of flame.
- Adjustable Burner Tray flanges allow varying thickness of tops from 1/2" to 2 3/8" thick
- Ships as Natural Gas, 50,000 BTU/H
- Tested and Listed by Intertek for installation in USA and Canada, 5 Year Limited Lifetime Warranty
- Optional: Two sizes of Tempered Glass Windshields, Steel Stud Framing Kit, LP Conversion Kit

## Line of Fire



Manual Spark Ignition (Battery Operated) or Match Throw Linear Fire Burner System for Built-In Custom Applications.

Available in 30" and 36" sizes

### Match Throw

- Match Throw Kit includes: Burner, Orifice/Air Shutter, 1/2" Female Fitting, 46" Stainless Steel Tranquiline Gas Flex, 1/2" Male Fitting, Key Valve, Polished Chrome Cover and 8" Polished Chrome Key

### Manual Spark Ignition

- MSI Kit includes: Burner, Orifice/Air Shutter, 1/2" Female Fitting, 46" Stainless Steel Tranquiline Gas Flex, 1/2" Male Fitting, Key Valve, Polished Chrome Cover and 8" Polished Chrome Key, Spark Electrode, Spark Igniter and Battery, Stainless Steel Igniter Shield, Installation Junction Box and Stainless Steel Face Plate
- Optional: LP Conversion Kits and Stainless Lids with Brushed Finish

# FIRE PIT SYSTEMS & BURNERS

FEATURING BURNING SPUR AND FIRESTAR



## G90 Series and Stainless Steel Fire Pit Burner Systems

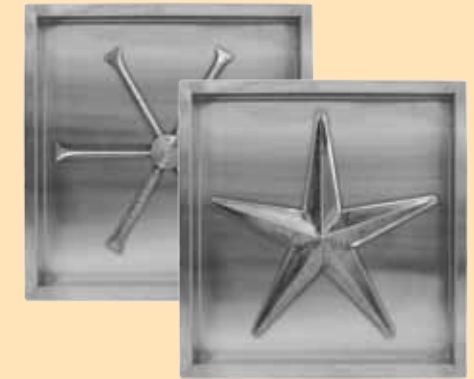
### Round Fire Pit Burner



G90 Series Round sizes available: 16" and 25"

Stainless Steel Round sizes available: 19" and 25"

### Square Fire Pit Burner



Square sizes available: 14", 20", 26" 32" and 38"

Available in Match Light and Manual Spark Ignition Kits

Match Light Kits include: Pan, Burner, Orifice/Air Shutter, 1/2" Male Fitting, 46" Stainless Steel Tranquiline Gas Flex, 1/2" Female Fitting, Key Valve, Polished Chrome Cover and 8" Polished Chrome Key

Manual Spark Ignition Kits include: Pan, Burner, Orifice/Air Shutter, 1/2" Male Fitting, 46" Stainless Steel Tranquiline Gas Flex, 1/2" Female Fitting, Key Valve, Polished Chrome Cover and 8" Polished Chrome Key, Spark Igniter with Ignition Wire, Stainless Steel Igniter Shield, Installation Box, Stainless Steel Cover Plate, Battery

### firestar



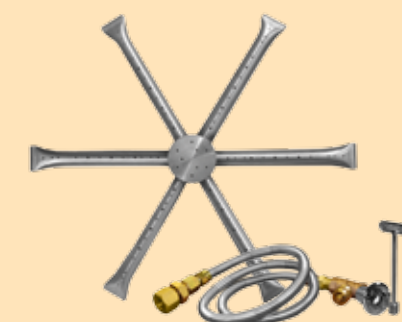
Sizes: 12", 18", 24", 30", 36" and 48"

### firestar Kit



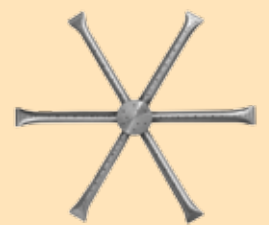
Sizes: 12", 18", 24", 30", 36" and 48"

### Burning Spur Kit



Sizes: 10", 14", 20" and 28"

### Burning Spur



Sizes: 10", 14", 20" and 28"

Kits include: Burner, Orifice/Air Shutter, 1/2" Male Fitting, 46" Stainless Steel Tranquiline Gas Flex, 1/2" Female Fitting, Key Valve, Polished Chrome Cover and 8" Polished Chrome Key

### Fire Pit Lids

All lids are made of 304 Stainless Steel with a Brushed Finish



# READY TO FINISH FIRE PITS

### ROUND



42", 48" 60" and 72" diameter

### SQUARE



36", 42", 48" and 60" lengths

### LINEAR



42", 48" 60" and 72" lengths

Ready to Finish "RTF" fire pit forms constructed of 22 Gauge Galvanized Steel Studs and Corners, fully welded with Hardi Backer Board applied. Each unit ships with two Stainless Steel Vents. All RTF fire pits are standard 18" tall.

Must specify burner cutout dimensions at time of ordering

